


INDUSTRIAL AUTOMATION SOFTWARE

**progea** 



A team with a passion  
for innovation





# Progea, a world leading industrial supervision software company



Dynamic evolution is Progea's philosophy, the international group that bring innovation in automation software platforms since over 20 years. The company has been operating and has a very deep experience in producing industrial software with a steady growth in sales and profits and expanding international presence. Progea has had the insight to regulate its growth, investing in technological innovation and R&D, more than marketing, pursuing long-term goals based on concreteness and reliability, in a world such as the software sector where superficial aspect and marketing override the importance of technology. Protagonists in a fast growing automation software sector, Progea continues to earn its share in the market not only for product quality but also for its top notch product correlated support and services. These are essential components that go hand in hand with such software that without or poorly provided may cause dire consequences to the point of causing serious indirect costs for the end user. The company team enthusiasm in their work is reflected by the top quality products developed to the benefit of customers. The company is organized for efficiency in planning, supporting and promoting one of the most innovative Scada/HMI software on the international market. Company insight and good strategic planning has been awarded with important market gain both in the Italian and International markets. The professionalism of the Progea overseas distribution network has played a crucial part in this achievement allowing them to establish international partnerships that include some of the most prestigious companies in the world: Phoenix Contact, ASEM, Panasonic, VIPA, Suetron, just to mention a few. These partnerships prove that the advanced technology of the Progea software can be defined as the state of art in Scada/HMI platforms.

## The Team

A very dynamical company ran by very motivations and young team of managers, design engineers and technicians characterize Progea's vocation for innovation.

What makes Progea special is group teamwork where all are enthusiastically involved in the Movicon™ project. Group harmony reinforces optimal information sharing that render product integration possible at all levels. Enthusiasm and efforts of their work shine through resulting product quality to the benefit of all customers. The company is efficiently organized to design, support and promote one of the most powerful SCADA software on the international market. With headquarters in Modena, Italy, the Progea group refers to an international sales and distributor network. Progea currently employs more than 40 personnel of whom 75% are engineers and technicians dedicated to product development and customer care services.

The Progea software technology is designed and engineered in the head offices in Modena, Milan and Padova. The company is also present directly in Germany, the USA and Switzerland who represent Progea throughout an international distribution network consisting of over 35 distributors worldwide.

## Research & Development

Progea is strongly convinced that following the roads towards innovation lead to gaining great competitive advantages on the market, especially in a sector where evolution is constant and fast. By being fully aware that this implies a great commitment of resources, Research and Development is crucial to Progea's strategy. It has been demonstrated that the market reflects such commitment and awards those companies that offer the best products aligned with evolutionary trends in the world of applied computer science to industrial production. Such products that are well supported technically equate to affordability and sustainability. By adopting these concepts, Progea invests more than 30% of its resources in Research and Development, analyzing trends and new technologies so that they can integrate the best within their product architectures.

## Services

The company is specialized in providing 'tailor-made' services to its customers to ensure indispensable value added support activities in addition to their software product correlated Technical Assistance Services. Progea offers its customers two decades of experience in automation software, experience that has matured by confronting and solving everyday problematic issues relating to PLCs, networks, field buses, and modems. The main services provided are: Learning, Assistance, Consultancy, Driver Development and Custom Solutions.



## ■ Company History

1991

Progea began operating as a software house for the automation sector. Progea initially focused its activities on the industrial supervision sector by developing applications for Windows-based PCs. In response to increasing demand, they decided to concentrate efforts on developing supervision platform software that was open, simple and intuitive and based on Windows based on their own experience and of those deriving from the market of system integrators.

1992

The "P.M.E. Project" (Progea Monitoring Environment) came into action. This led to the release of the first product for Windows 3.11 called Movicon (Monitoring, Vision & Control). This was a Scada/HMI platform software for creating supervision, monitoring and control applications that, even though an experimental version, had such a big success that it encouraged the company to invest all its resources in it.

1995

Windows 95 and Windows NT arrived and Progea released Movicon 7, a new product generation for Win32 (32 bit) platforms, rewriting the initial 16 bit C code with new C ++ compilers.

1998

In response to the success of the first trade fair exhibitions, Progea launched an expansion plan. The new company strategy involved investing in a territorial sales structure by creating branches in Italy and overseas to support an international distribution network.

1999

Progea Deutschland GmbH went into operation allowing Progea Srl, the mother company, to confront the German market and most important market in Europe directly.

2000

Progea continued expanding by opening another branch near Milan and employing new personnel and establishing a sales network on a national scale. The following year, Progea brought larger modern offices in via S. Anna in Modena, a spacious and technological building which could accommodate the company's activities better. In the meantime, Movicon 9 was launched,

a superior platform, reliable and complete, that increased the company's success further due to supporting Windows CE as well.

2004

After constant product evolution, the company took another gigantic leap forward when releasing the revolutionary Movicon X product version. This version incorporates the emergent technologies, such as XML, SVG, Web Services, within the panorama of Scada/HMI. By implementing these new technologies into their products, the company was able to attract more attention in the European market sectors gaining new important partnerships with multinational companies operating in the world of automation.

2008

Product evolution continued with the release of Movicon™11 which soon became a technological reference point within its sector. Its increased performances, openness, flexibility and reliability were able to offer users even greater satisfaction. The success of Movicon 11 encouraged the company to push harder towards internalization.

2009

Progea International went into operation with offices in Lugano (CH), with the mission to manage the international distribution network and promote Progea worldwide.

2011

Celebrations for 20 years in operation and the opening of a new branch in Wisconsin in the USA: Progea USA LLC. The R&D team make further headway on new technologies preparing the future generation of Movicon, based the WPF, OPC UA, Silverlight, HTML5 and XAML technologies.

2013

The year that awaits in anticipation the brand new product generation, Movicon.NExT release. Windows 8 is released and after 20 years in operation Progea proves once again to be the most innovative company in its sector. The new Movicon.NExT technology anticipates the future, outdoing rival products and reconfirms the state of art in Scada/HMI platforms



## Mission and Code of Ethics

Progea's mission is to promote an international culture of innovation and quality, creativity and excellence in the development of software technology. A technology that is forever innovative within the Progea management towards customer care, sales and services.

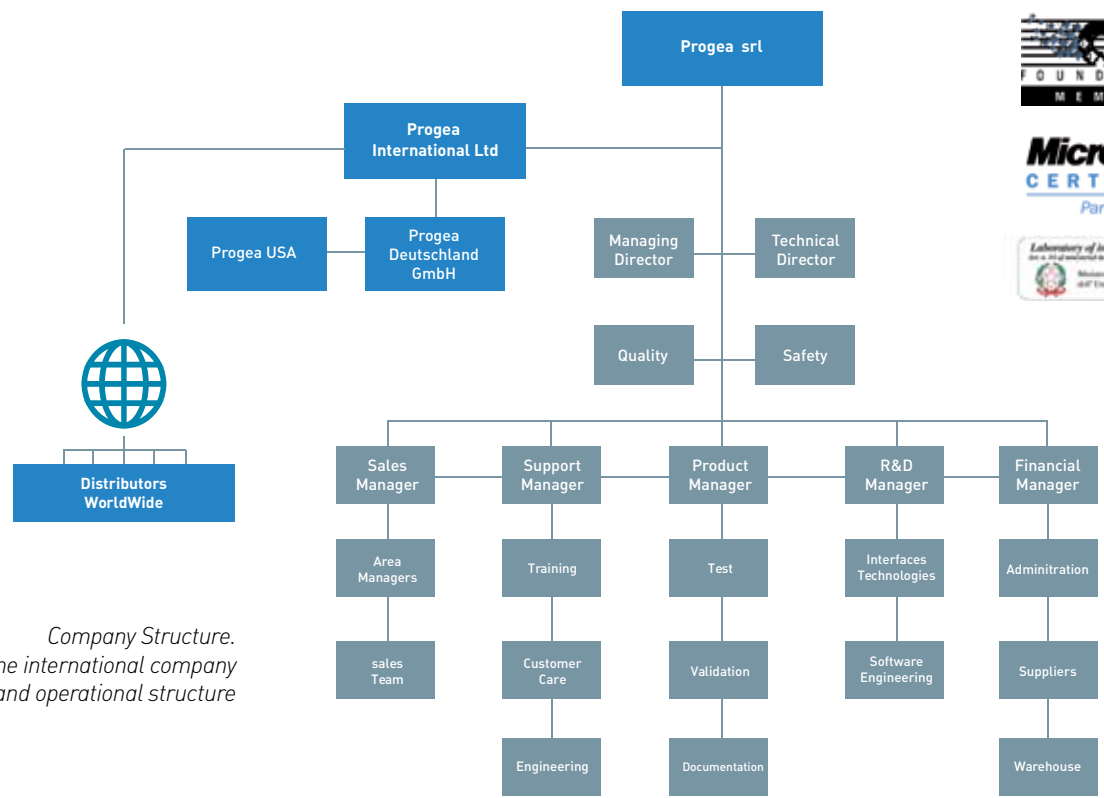
Our team is friendly, young, flexible, strongly motivated and oriented towards everyday challenges of technological development. Challenges that demand close teamwork and welcomes new ideas as part of our policy for innovation. Our team is a reference point model of excellence that defines new targets in the automation software sector. Our company adopts a code of ethics that encompasses: conformity with endorsed laws and regulations, confidential information protection, privacy and data security, safeguard and proper use of company assets, policy to uphold quality, respect for human rights through correct company management procedures, correct and comprehensible data externally and internally, correct and careful financial management, long-term investment policy with bonuses awarded to personnel, eco-friendly, complaints, suggestions and unlawful behaviour alert management.

## Accreditations and Certifications

Progea has been managing its business processes in accordance with the UNI-EN ISO 9001:2008 quality normative, with TÜV system certification since 2001. In addition, their software product development meets all the audit requirements stipulated in the UNI-EN 50128 safety regulations.

In addition to the strict quality certifications, Progea operates within the Microsoft developer ambient and is a "Microsoft Certified Partner" to guarantee Microsoft standards compliancy with all its products. Progea is also an active member of the consortium OPC Foundation and is officially nominated the OPC Foundation chairmanship of Italy participating in developing and establishing the consortium's technical specifications.

Progea is accredited by the Research Laboratories of the MIUR (Italian Ministry of Education, University and Research), testifying their innovative nature and the great efforts in research and development.



*Company Structure.  
This chart shows the international company group organization and operational structure*



## User references of Progea products

### Automotive, Railways, AeroSpace

- Alenia Aerospace
- Autostrade Spa
- Landini Tractors
- Ferrari
- Fiat Industrials
- Ford Motors
- Henniges Automotive
- IVECO
- Maserati
- Nissan Trucks
- Pininfarina
- Suzuki PowerTrain, India
- TATA
- Thales Group

### Building Automation

- Aquileia Historical Cathedral
- Ataturk Airport Istanbul
- Bonnet Malls
- Castello Sforzesco, Milano
- Centro Leonardo, Rome
- Deutsche Bank, Milano
- Elba International Hotel
- Geant Casino, France
- Intelcom - Telecom S.Marino
- Interporto Bologna
- Luxottica Group
- Torino Ice Olympics 2006
- Thun - Logistic center
- Vaticano - Sala Paolo VI

### Chemical & PetrolChemical

- AGIP
- Bachelite
- Colorobbia
- Dow Chemical
- Enichem
- Exide Batteries, Hosur
- Fassa Bortolo
- FOX Petroleum
- Osram
- Petrodar Operation Co
- Western Coal
- SOL
- SOLVAY
- Sidda Ganga Oil Extraction
- Texaco

### Food & Beverage

- Barilla
- Beretta Salumi
- Campari
- Galbani
- Granarolo
- Montana
- Nestlè
- Müller Yogurt
- ParmaReggio
- Perfetti Van Melle
- Perrier
- Plasmon
- Tukas

### Heating & Refrigeration

- DHP AMARC
- Bofrost
- Coster
- Clivet
- Elywell
- GEA Technofrigo
- Laterforni
- Orogel Frost
- Uniflair

### Infrastructures

- Airport Singapore
- Airport Rome-Milano
- Airport Lugano CH
- Autostrade Italia
- Domodedovo, Moscow
- Israel Highway Lighting
- Metropolitane Milanesi
- New Delhi Metro, India
- ANAS Tunnels
- Reverberi ENETEC

### Plastic, Texile

- Bausano Group
- IKK
- Manuli Rubber Industry
- Montefibre
- Phoenix Contact
- Piovan Group
- Polyglass
- Gualchierani
- Indo Australian, Pune
- Kordsa
- RadiciFil

### Paper, Wood, Ceramic & Glass

- Delmac
- De Mori
- Keraglass
- Gopal Glass, India
- Glass Pack, France
- Grenzebach
- IRIS Ceramiche
- Laminam System
- O+I BSN, France
- Owens
- SAG
- Saint Gobain
- SCM Group
- SIV

### Pharmaceutical

- Aurobindo Pharma
- Boiron
- Corima
- IFS France
- Wyeth Lederle
- Rohne Poulenc UK
- Serono CH
- Sigma Tau
- Romaco Group - Zanchetta
- Zhermack
- Zambon

### Power & Energy

- AceGas
- ABB Sace
- BARC
- CPL Concordia
- Mauell Ag
- ENEL
- MAN Energy
- MP State Electricity Board
- NAL Wind Turbine, India
- Hamitabat, Turkey
- W2E Waste to Energy, Korea
- West Bengal Electric
- SNAM Progetti
- Power Grid Corporation
- Schneider Electric

### Machinaries, Packaging, Mechanical

- American National Can
- Caterpillar
- Comecer
- Gämmerler
- Gima Packaging
- Hygena
- Hirsch
- Idra Presse
- Irce
- IKEA
- Koch Glitsch
- Kosme Krones Group
- Walter Tosto
- Marcegaglia
- Minganti
- Rolls Royce Turbines
- Sponge Iron, India
- SKF Industries
- TetraPak

### Water Treatment

- Acsm
- Acque Spa, Toscana
- Aimag
- Antalia Municipality
- Balaji Controls, Nigeria
- Istanbul City
- Lyonnaise des Eaux
- Madrid City
- Mediterranean Acque
- Hera Group

### Research

- ENEA
- ENI Risorse
- EURATOM - Joint Research Center ISPRA

### Partners

- ASEM
- PANASONIC Electric Works
- PHOENIX CONTACT
- VIPA
- SÜTRON
- KEB
- Forbes Marshall



© 2013 Progea Srl - All rights reserved

**Progea Srl**  
Via S. Anna 88/E  
I-41122 Modena  
[info@progea.com](mailto:info@progea.com)  
Tel +39 059 451060

**Progea International Ltd**  
Via Penate, 16  
CH-6850 Mendrisio  
[international@progea.com](mailto:international@progea.com)  
Tel +41 91 96 76 610

**Progea Deutschland GmbH**  
Marie-Curie Str., 12  
D-78048 VS Villingen  
[info@progea.de](mailto:info@progea.de)  
Tel +49 7721 99 25 992

**Progea USA LLC**  
2800 East Enterprise Avenue  
WI 54913 Appleton  
[info@progea.us](mailto:info@progea.us)  
Tel +1 888 305 2999

